

Grade Level:

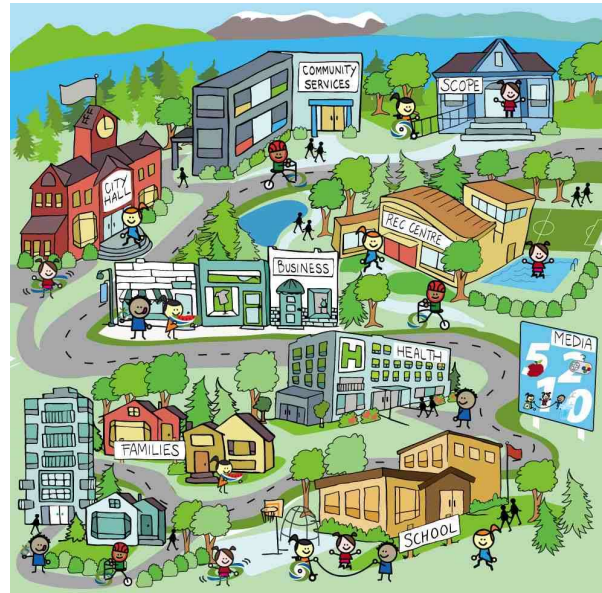
Transitional Kinder

Project Title:

TK Town

Driving Question:

What important landmarks make a community and why is it important to know where those landmarks are in a community?

**Content:**

- SLTK.1- Participate in collaborative conversations with diverse partners about kindergarten topics and texts with peers and adults in small and larger groups
- SLTK.4- Describe familiar people, places, things, and events
- SLTK.5- Add drawings or other visual displays to descriptions as desired to provide additional detail
- HSS-K.4.4- Construct maps and models of neighborhoods, incorporating such structures as police and fire stations, airports, banks, hospitals, supermarkets, harbors, schools, homes, places of worship, and transportation lines.

Major Products:

Students will independently create a detailed city map with homes, a grocery store, a hospital, and police station. In small-groups, students will create a 3D city block made from blocks and boxes with important community landmarks.

Making it Public:

TK students will display their model and inform the Kindergarteners on community landmarks to contribute to Kindergarten's understanding of communities and community helpers.